

HOUSINGS

ELI GEARS

INSERTS

### Compact Spinning Components

#### Intermediate Gear, Gear Shaft & Inserts

- ◆ Intermediate Gears made up of Genuine Raw Materials and perfect Teeth shape make a exact meshing of Front Top Roller gear as well as Eli Top Roller gear fitted with German Bush.
- ◆ German Bush ensures smooth rotation and less wear and tear.
- ◆ Gear Shaft made up of Genuine Raw materials with right Dimensions suitable for Intermediate Gear as well as fixing places.
- ◆ Inserts made up of Genuine Raw materials suitable for the system it ensures smooth rotation of Lattice Aprons and Elite Top Rollers and not to damage each other.

Manufactured by

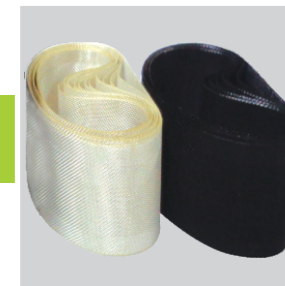
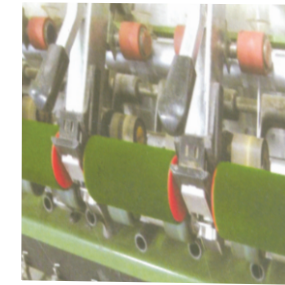
# SRM TECHNOLOGIES

1/54G-3, Valaiyapalayam Pirivu,  
Karumathampatti - Annur Main Road,  
Kaduvettipalayam Post,  
Coimbatore - 641 659.

98432 52721, 98433 52721

madhur@srm-technologies.in

www.srm-technologies.in



## SRM TECHNOLOGIES



The Largest Manufacturer of Flocked Clearer  
Rollers and Compact Lattice Aprons





## FLOCKED CLEARER ROLLERS

### Automatic Flocked Clearer roller Cleaning Machine

In general we need a person to stand and feed clearer roller by manually to the cleaning machine. To reduce the manpower our system can be used and simply dump the clearer roller in the bowl feeder and it can be fed into the cleaning machine one by one without the help of workman.

This unique machine is developed for the quick and effective cleaning of flocked clearer rollers. It is fitted with maintenance free gear box and consumes very less power.



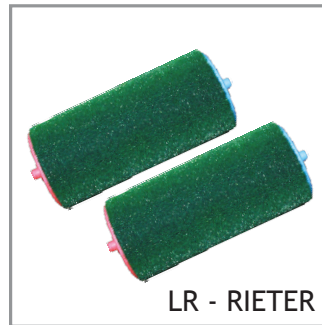
During cleaning, the metal wire in the cleaning machine will softly go to the bottom surface of the flocked fibers of the clearer roller and it completely removes the dust and waste collected by the clearer roller.

- It eliminates,
- ◆ Reduce the manpower.
  - ◆ Manual errors.
  - ◆ Improve the cleaning.
  - ◆ Eliminate the accidents.

This retrofit auto feeder can be fitted any kind of cleaning machine.



COMBER



LR - RIETER



SKF DRAFTING

### Range of Flocked Clearer Rollers

#### For Ring Frames :

Available for RIETER, ZINSER, LMW, KTTM, TOYODA, MARZOLI, SUESSEN and all type of Ring frames and Doubling Machines.

#### For Combers :

Available for RIETER-E7/4, E7/5, E7/6, LK250, LK54, LK64, E60, E60H, E62, E65, CHERRY HARA, TOYODA and LMW combers.

### Advantages

- ◆ Effective cleaning gives better yarn quality.
- ◆ More cleaning efficiency than the conventional clearer rollers.
- ◆ Working improvements gives lesser Autoconer clearer cuts.
- ◆ Simple Cleaning Process.
- ◆ Zero Maintenance.



LONG LIFE CLEARER ROLLERS



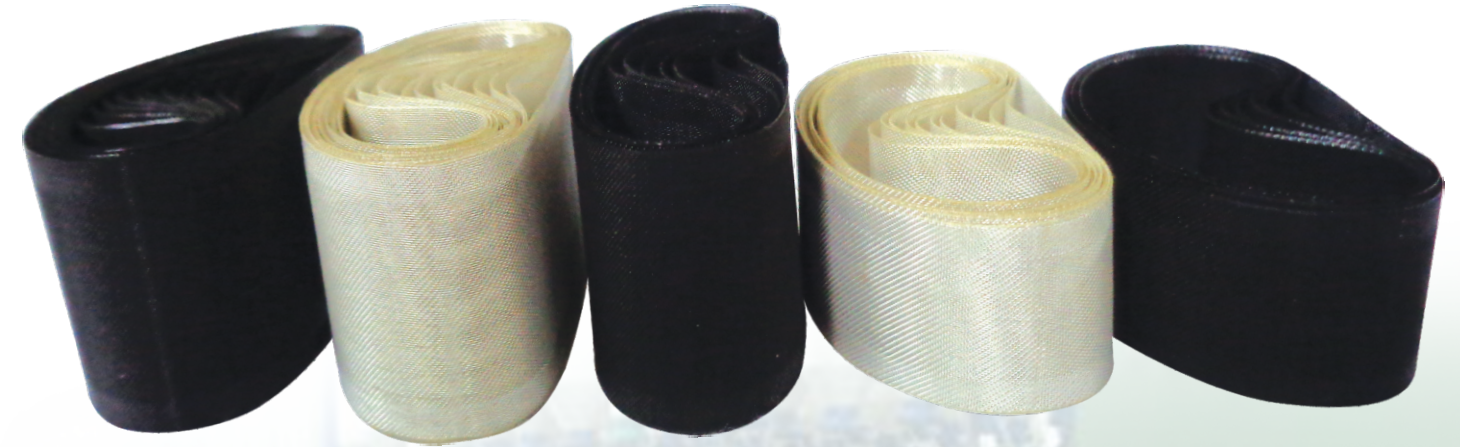
COMBER SPIRAL BRUSHES



SYNTHETIC CLEARER ROLLERS



## LATTICE APRONS FOR COMPACT SPINNING



Lattice Apron is most important part in Compact Spinning, it is the only part in-contact with the material processed.

1. Fibre Compacting has to be done through Uniform Suction with help of Uniform Fabric as well as Uniform Mesh/cm.
2. The Apron Material has to be anti static.
3. It has to dissipate the Static Electricity which is produced during running over the metallic surface Mango tube and dead weight.
4. Apron material has to be self lubricant to run smoothly and reduce the friction.

### We have two Types of Apron.

- ◆ White by Gold ----- N-STAT
- ◆ Black by Black ----- LUBE-STAT

Apron Life - Upto 8 months it depends upon the Count Processed, Speed & Humidity Conditions.

### Compare with Competitor Apron

- ◆ Our Apron having Uniform Fabric Quality with Uniform Mesh/cm. We can achieve better compacting.
- ◆ Our Raw Materials (Gold/Black) can able to dissipate the Static Electricity.
- ◆ Our Raw Materials are Self Lubricant and friction is less and it will run smoothly.

Apron Size	Compact System
36.5 x 25 mm	For Sueszen
39.4 x 17 mm	For Toyota - 1 (RX 240)
45.6 x 20 mm	For Toyota - 2 (RX 300)
43.5 x 18 mm	For Pinter
37.5 x 22 mm	For RIFA Compact
37.5 x 25 mm	For Dechang Compact
39.4 x 25 mm	For H-FANG Compact (LR)
41.4 x 22 mm	For H-FANG Compact (Toyota)
52.7 x 18 mm	For LMW Compact